

DATAMAN

Vali-FLASH



Vali-Flash User Manual Version 3.0

| DATAMAN PROGRAMMERS, LTD. | |
|--|--|
| UK / EUROPE Station Road Maiden Newton Dorchester Dorset DT2 0AE TEL: 01300 320719 (+44 1300 320719) FAX: 01300 321012 (+44 1300 321012) EMAIL: support@dataman.com WEB: www.dataman.com | USA / CANADA Dataman, Inc. 215 East Michigan Avenue Orange City, FL 32763 USA TEL: (386) 774-7785 FAX: (386) 774-7796 EMAIL: validator@dataman.com WEB: www.dataman.com |

"Some things you just don't gamble with!!"



INTRODUCTION

The Dataman Vali-Flash is a PC Based Validator for calculating CRC-32 and SHA-1 signatures of various CompactFlash™ devices. The Vali-Flash offers many advanced features including:

- *Support for complete range of CompactFlash™ devices*
- *Can utilize any drive recognized by Windows OS (PCMCIA, USB, FireWire)**
- *Signature compatibility with all other Dataman Validator products*
- *Full database features including search and edit of all records*
- *Encrypted Database files and visual CRC32 checksum – to prevent tampering*
- *Protected Program File (.exe) to prevent tampering*



SYSTEM REQUIREMENTS

MS-Windows **2000/XP ONLY**.

Available CD-ROM drive.

Minimum 40 MB or more of free disk space.

Available USB port for CompactFlash™ card reader



PACKAGE CONTENTS

USB CompactFlash™ card reader (for use with PC or Laptop).

CD-ROM containing the Vali-Flash software.

Software License Agreement.

User's Manual.

* The Memorex CompactFlash card reader (part number 3250 8200) is included for maximum compatibility.



INSTALLATION

1. To use the USB CompactFlash card reader to validate your devices, please install the Memorex CompactFlash card reader and the drivers from the CD-ROM.
2. Once you have installed your CompactFlash™ reader and its accompanying drivers, you can proceed with the installation of the Vali-Flash software.
3. To install the Vali-Flash software, follow the normal installation procedure used for all Windows based programs. The installation program should automatically launch when the CD-ROM is inserted in your CD drive. If for any reason it does not, then simply RUN “setup.exe” from the CD-ROM.

NOTE: Please make sure you follow the proper Windows operating system procedures for ejecting hardware when disconnecting the CompactFlash card reader. Failure to eject or stop the card reader device prior to removing it may cause the Vali-Flash program to hang or incorrectly read the CompactFlash™ memory. This is only applicable to removing the card reader and not necessarily the CompactFlash memory unless you are using a PCMCIA card reader.

SOFTWARE REGISTRATION

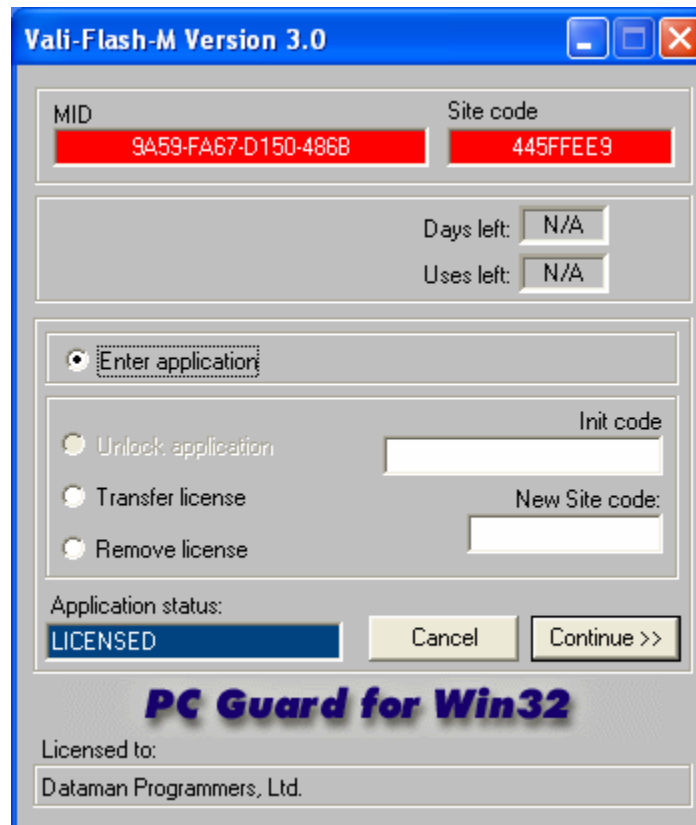
Once the software has been installed, you will need to register this product. When you run the software for the first time you will see a screen similar to the following:

To register your product, simply call our Support Hot Line at (800) 328-2336 and give them the 8-digit **Site Code** that appears in the Site Code block. You will notice that the Application Status block will display “LOCKED”. Once you have given them the site code, they will issue you an **Init Code** that will unlock your software. Enter the init code they give you in the Init Code block and click *Continue*. You will notice that the Application Status block will display “UNLOCKED”. To launch the software just click on “*Enter Application*” button then “*Continue*”. This completes the registration process for your product.

NOTE: PLEASE BE SURE TO RECORD YOUR SITE CODE AND INIT CODE IN A SECURE LOCATION TO ENSURE SOFTWARE REGISTRATION AND LICENSE. THE END USER IS RESPONSIBLE FOR RETAINING THEIR SITE CODE AND INIT CODE. LOSS OF THESE CODES WOULD REQUIRE A NEW VALI-FLASH SOFTWARE PURCHASE.

LICENSE TRANSFER

This product is licensed for one PC only. If you ever need to transfer this program to another computer you must perform the following steps:



1. Install the Vali-Flash software (from original CD) on the new computer. Launch the software and obtain the new 8-digit **Site Code** from the Site Code block of the registration screen of the new computer.
2. Run the UNLOCKED Vali-Flash program on original computer and enter the original **Init Code** (given to you on initial installation) into the Init Code block. Now enter the **New Site Code** from the Site Code block on the registration screen of the new computer. Click the *License Transfer* button then Continue.
3. The UNLOCKED Vali-Flash program on original computer will now display a dialog box with **New Init code** value in the New Init Code block. This **Init Code** can now be used to unlock the Vali-Flash program you installed on the new computer.

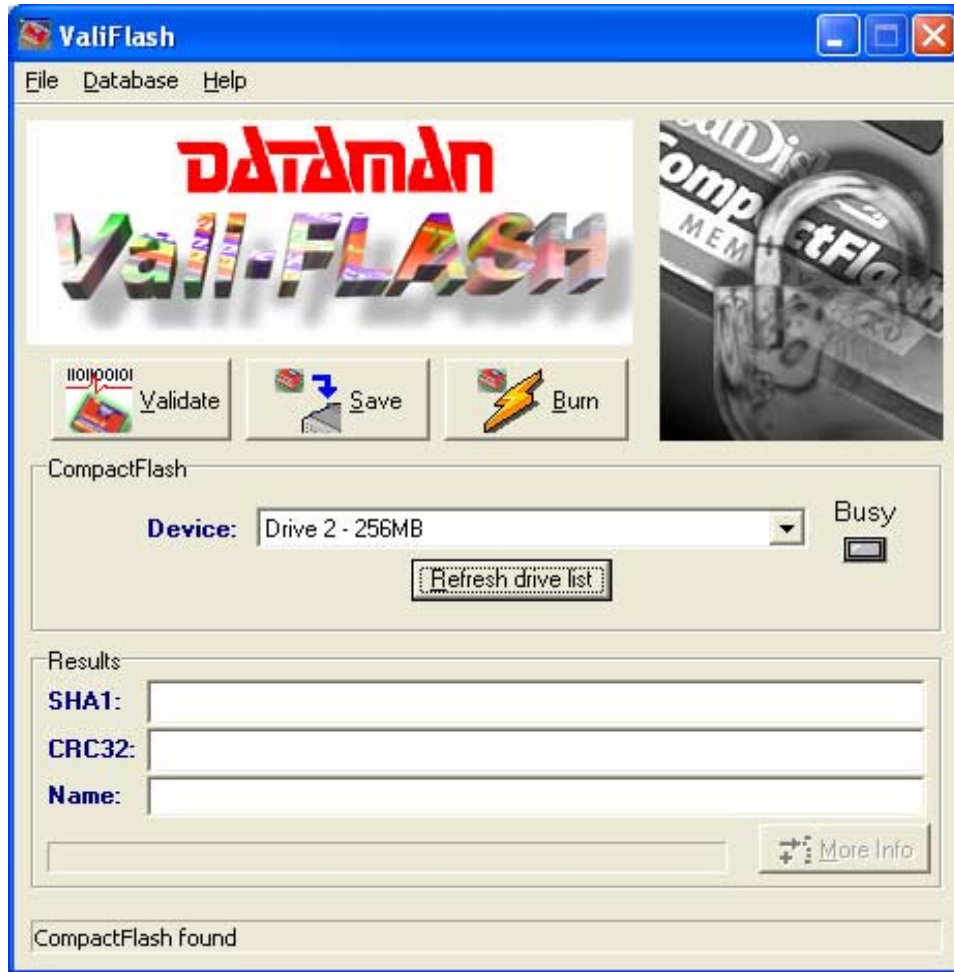
The license will be removed from the original computer and will now be installed on the new computer.

SOFTWARE OPERATION

Depending of which version of the software you are using (“E” or “M” version), one of the following screens should appear when you start the program:

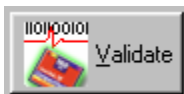


“E” version of software

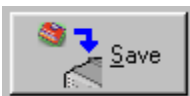


“M” version of software

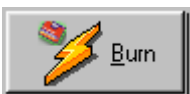
To obtain a signature, save an image or burn a copy of the CompactFlash™ device, simply insert the device into the card reader. Once the device has been properly inserted, click the “Refresh drive list” button. If more than one drive is displayed, select the desired drive that contains the CompactFlash™ device. Once you have selected the desired drive, you are ready to perform the desired function.



Validate: To validate a CompactFlash™ device, click the Validate button and wait for the device to be read. Once the device has been read and the signatures have been calculated, the results will be displayed on the screen.



Save: To read a CompactFlash™ device and save the image to your PC's hard disk, click the save button. You will then be prompted to enter a filename and path for your saved image file. Once this has been entered, the software will read the device and make a saved copy of the image to the folder you specified on your hard disk. *Note: This function is only available on the "M" version of the software, contact Dataman for more information.*



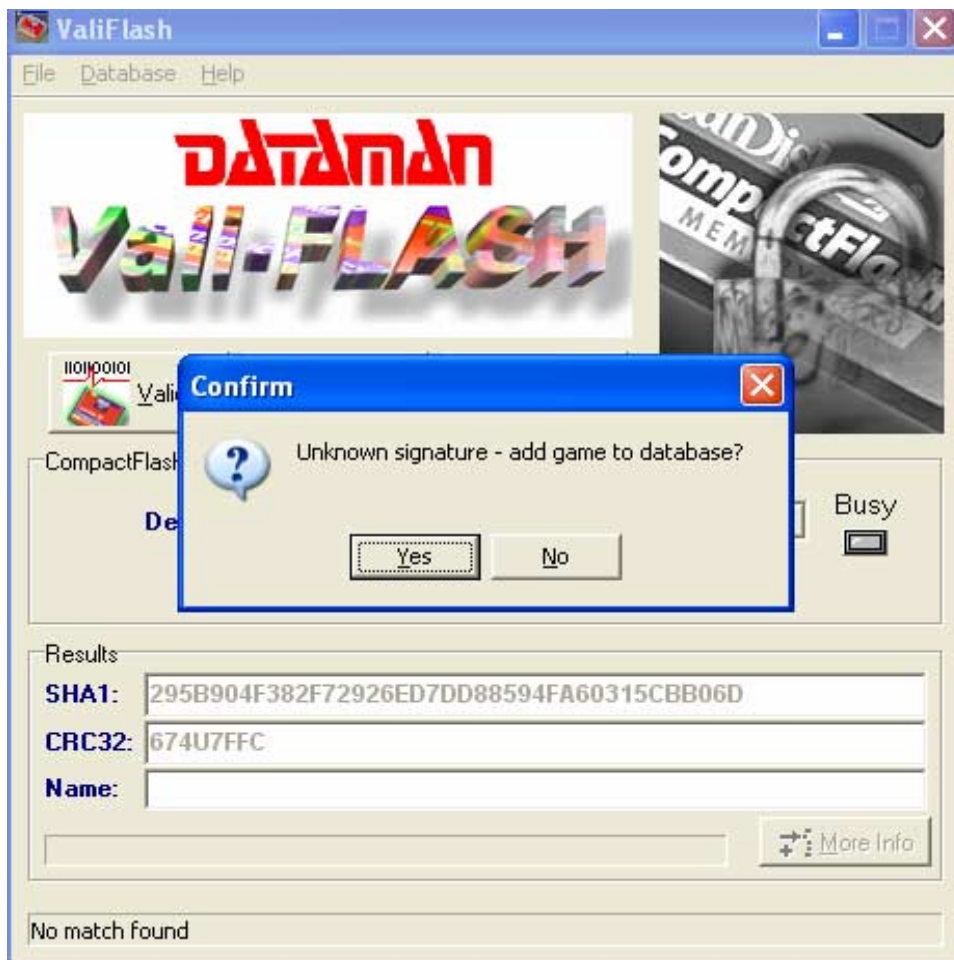
Burn: To program or burn a CompactFlash™ device from a saved image on your hard disk, insert a blank CompactFlash™ device into the card reader socket and click the burn button. You will then be prompted to enter the filename and path of your saved image file that you want to burn. Once this has been entered, the software will read the specified image file from your hard disk and burn the data into the blank CompactFlash™ device. Make sure that you insert the proper size CompactFlash™ device for the size image file you are attempting to duplicate. *Note: This function is only available on the "M" version of the software, contact Dataman for more information.*

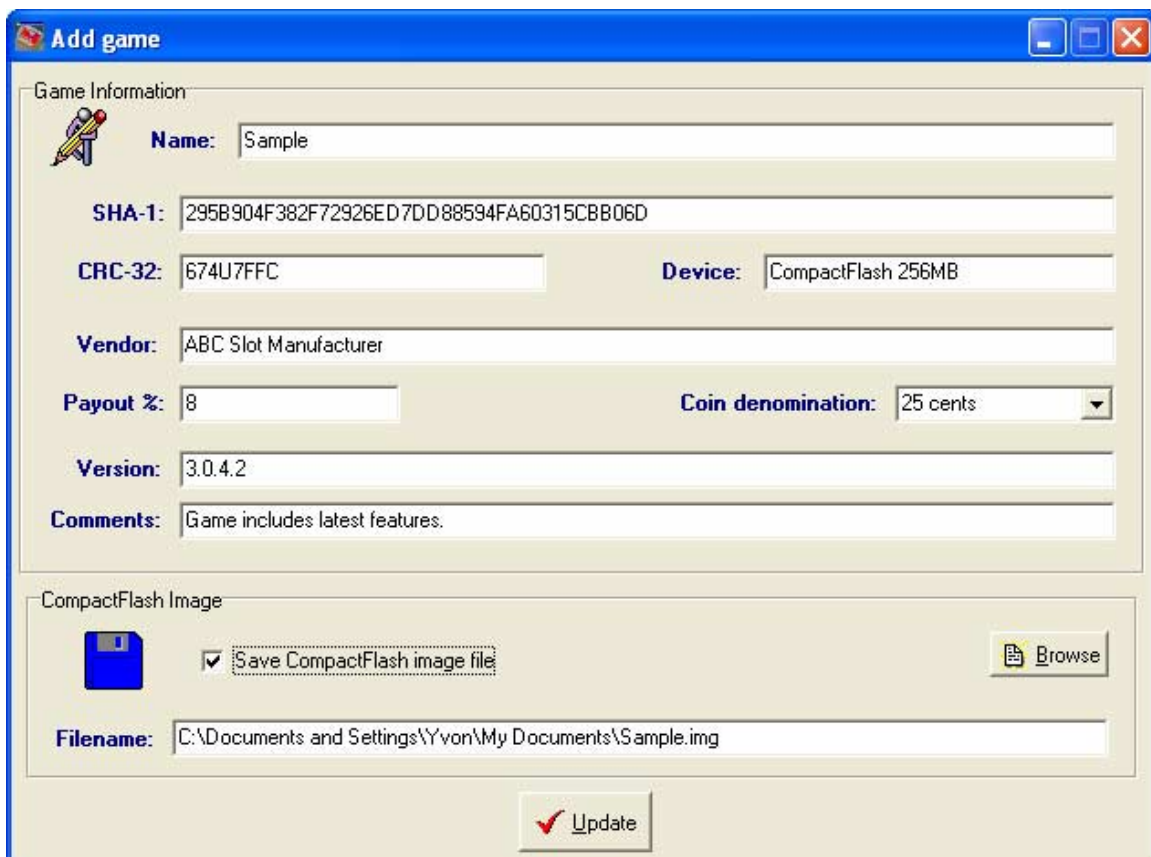
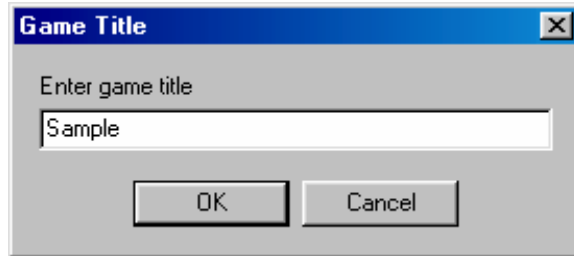
NOTE: Please make sure you never remove the CompactFlash™ device from the reader while the BUSY LED is lit. Doing so may damage the reader and/or the device under test. Each time you insert a new CompactFlash™ device into a reader, you must click on the "Refresh drive list" button and make sure that the new CompactFlash™ device has been sensed and the proper drive selected. Failure to follow these steps may result in the Vali-Flash program not sensing the correct device or not sensing any device at all in the reader. Before you remove the reader, you must stop/eject the hardware from within Windows by clicking the "Unplug or eject hardware" icon in the system tray and then stopping the device by clicking stop or eject. Windows will indicate that it is now safe to remove the card reader.

ADDING GAME TO DATABASE

Once the signatures are calculated, they are then compared against the database for a match. If no match is found, the user is prompted and asked if this new signature should be added to the database. If the user selects “No”, the signatures will not be added. If “Yes” is selected, the user will be prompted to enter a Game Name. Once the user enters a Game Name, the signatures will be added to the database. The next time this game is validated it should find a match and pull up the Game Name you just entered.

NOTE: There are only two conditions that will prompt you to enter a new game: Either the game in CompactFlash™ being validated does not exist in the database, or the data in the CompactFlash™ being tested does not match the data of the game in the database (hence a different signature). If you get this message and you believe the game already exist in the database, you should search the database for the game to confirm that it does not exist. If the game exists, but the signatures are different you should take all precautionary measures to verify the data integrity of the game.





If you want to add the signature to your database, fill in the desired fields then click the Update button. If you want to save an image of the device just read then click the “Save CompactFlash™ Image File” checkbox, enter the filename and path you desire (or Browse), then click the Update button. If no image copy is desired, then just click the Update button and the signature will be added to your existing database.

SEARCH AND EDIT DATABASE

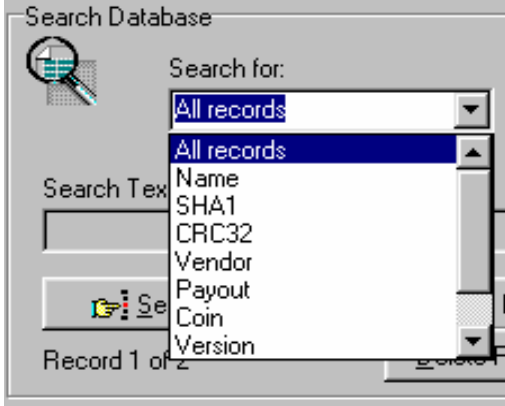
To use the search and edit features of the Vali-Flash software, left click on “Database”, then on “Search / Edit” from the main menu. You should get the following screen:

There are three ways to find a desired record in the database:

1. Sequentially search all records in the database using the Forward or Back button.
2. Click on “Browse NAMES” to list all the Game “NAMES” in the database.
3. Enter a value in the “Search Text” field, then select the field you wish to search by selecting it from the “Search Field” drop down menu.

In all cases clicking the “Search” button will display all matching records. The matching records count is displayed below the search button. If a matching record is found then the “Edit” and “Delete” buttons will become visible. Use the “Delete” button to delete the current record, pressing this button will cause the user to confirm that the record is to be deleted.

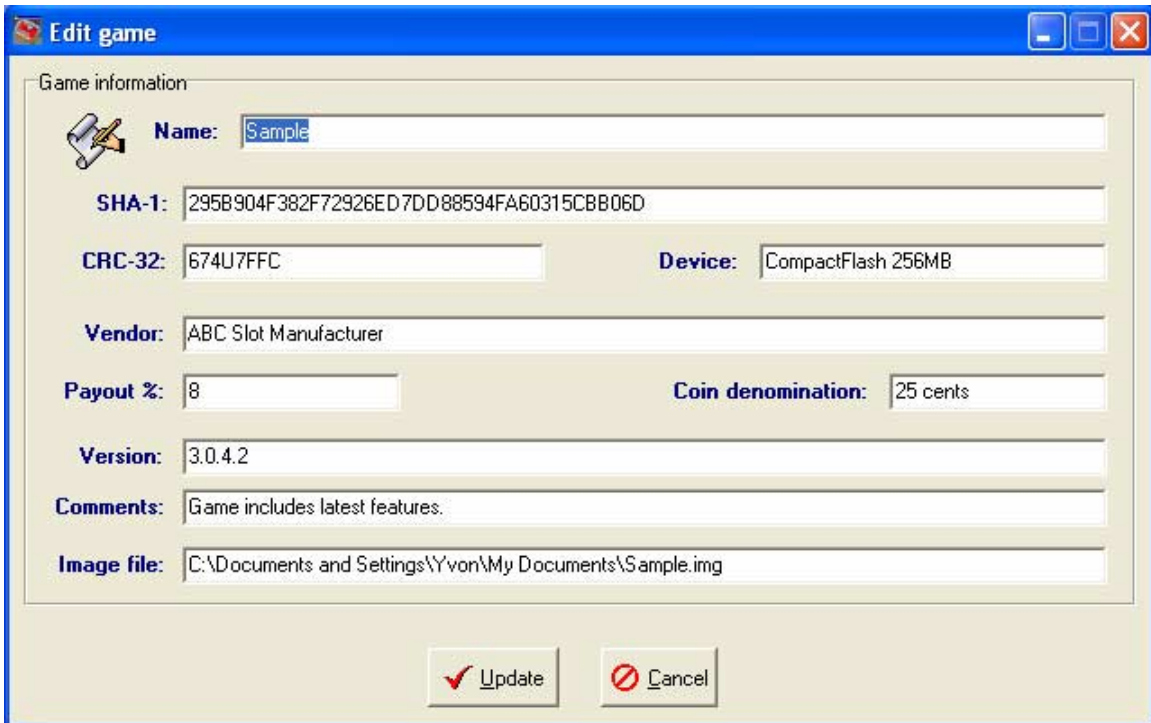
NOTE: Once the record has been deleted there is no way of retrieving it. If there is more than one record which meets the search criteria then the forward and back buttons become enabled.



The Search field lets the user choose which field of the database to search on. The default search criteria is “All records”. This enables you to look at each record in the database by clicking the “Forward” or “Back” button. You can also display a list all the names by clicking the “Browse NAMES” button, this will open a drop down listing of all game titles.



Once a game has been found in the database it is possible to edit the details. To find a game, simply use the search function and then click the “Edit Record” button. This will display the following screen:



Edit Screen

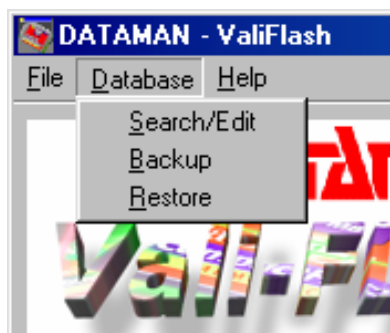
All fields that have a white background can be edited, once all changes have been made click the “Update” button and the Database will be updated with the changes.

DATABASE INFORMATION

Located on the right hand side of the “Search / Edit” screen is the database information panel. This panel looks like the following:



Database information shows the total number of games held in the database and the calculated CRC-32 checksum for the database file. The database itself is encrypted and any attempts at modifying it outside the Vali-Flash software will render the file useless. The CRC checksum is calculated from the main database file and any changes to this file will affect the checksum. This can be used to ensure that a known trusted database is being used.



To backup the database file use the “BACKUP” button. Left clicking this button will cause the program to request a file name and then make a copy of the database using this name.

The “RESTORE” button will restore any previously backed-up copy of the database.