

DATAMAN

User's Manual for

DATAMAN-848PRO

Fast universal 8x 48-pindrive Stand-Alone concurrent multiprogramming system



October 2007

**COPYRIGHT © 2007
Dataman Programmers Ltd**

This document is copyrighted by Dataman Programmers Ltd, United Kingdom. All rights reserved. This document or any part of it may not be copied, reproduced or translated in any form or in any way without the prior written permission of Dataman Programmers Ltd.

The control program is copyrighted by Dataman Programmers Ltd. The control program or any part of it may not be analyzed, disassembled or modified in any form, on any medium, for any purpose.

Information provided in this manual is intended to be accurate at the moment of release, but we continuously improve all our products. Please check for an updated manual on our website at www.dataman.com.

Dataman Programmers Ltd assumes no responsibility for misuse of this manual.

Dataman Programmers Ltd reserves the right to make changes or improvements to the product described in this manual at any time without notice. This manual contains names of companies, software products, etc., which may be trademarks of their respective owners. Dataman Programmers Ltd respects those trademarks.

ZLI-0308A

Table of contents

Introduction	4
DATAMAN-848PRO elements.....	7
Manipulation with the programmed device	8
In-system serial programming by DATAMAN-848PRO	8
Selftest and calibration check	9
Technical specification.....	11
Programming a device	16
Engineering mode.....	16
Production mode.....	20
Software	23
Detailed description of Graphics user interface with touch screen	23
Administration of build in PC.....	39
Troubleshooting and warranty	44
Troubleshooting	44
If you have an unsupported target device.....	45
Warranty terms	46

We continuously update our manual. You may find the latest version from our website (www.dataman.com).

Conventions used in the manual

References to the control program functions are in bold, e.g. **Load**, **File**, **Device**, etc.
References to control keys are written in brackets <>, e.g. <F1>.

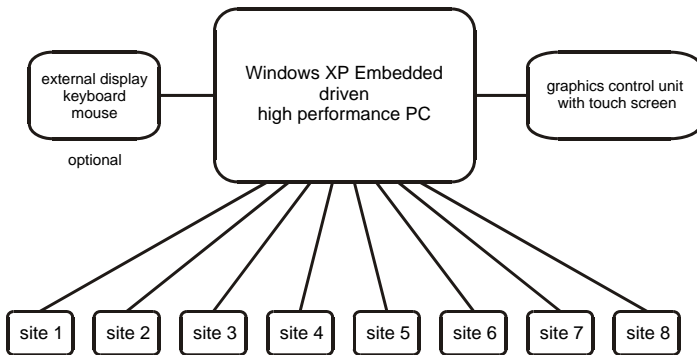
Terminology used in the manual:

Device	any kind of programmable integrated circuits or programmable devices
ZIF socket	Zero Insertion Force socket used for insertion of target device
Buffer	part of memory or disk, used for temporary data storage
USB port	type of PC port
HEX data format	format of data file, which may be read with standard text viewers; e.g. byte 5AH is stored as characters '5' and 'A', which mean bytes 35H and 41H. One line of this HEX file (one record) contains start address and data bytes. All records are secured with checksum.

Introduction

DATAMAN-848PRO is extremely fast universal 8x 48-pin drive **Stand-Alone concurrent multiprogramming system** designed for high volume production programming with minimal operator effort. The chips are programmed at near theoretical maximum programming speed.

Block scheme of DATAMAN-848PRO



DATAMAN-848PRO consists of eight independent isolated universal programming modules, based on the **DATAMAN-48PRO+** programmer hardware. Therefore DATAMAN-848PRO sockets can run asynchronously (concurrent programming mode). Each programming module starts programming at the moment the chip is detected to be inserted in the socket properly - independently of the status of other programming modules. This results in seven programming modules working while you replace the programmed chip in the eighth.

Graphical control unit with touch screen provides basic control and easy monitoring of the programming flow.

Modular construction of hardware - the programming modules work independently - allows for continuing operation when a part of the circuit becomes inoperable. It also makes service quick and easy.

Hands-free operation: asynchronous and concurrent operation allows a chip to begin programming immediately upon insertion of a chip. The operator merely removes the finished chip and inserts a new chip. Operator training is therefore minimized.

DATAMAN-848PRO supports all kinds and types of silicon technology found in today's and tomorrow's programmable devices without family specific modules. You can be sure

that new device support requires the software to be updated and (if necessary) simple package converter (programming adapter), therefore the ownership costs are minimized.

Using built-in in-circuit serial programming (**ISP**) connector, the programmer is able to program ISP capable chips in circuit.

DATAMAN-848PRO provides very competitive price coupled with excellent hardware design for reliable programming. It has probably best "value for money" programmer in this class.

DATAMAN-848PRO provides very fast programming due to high-speed FPGA driven hardware and execution of time-critical routines inside of the programmer. At least programming speed is faster than competitors in this category, for many chips it is much faster than most competitors. As a result, when used in production this programmer waits for an operator, and not the other way round.

DATAMAN-848PRO provides the two banana jacks, one for ESD wrist strap connection for easy-to-implement ESD protection and the second one for connection to ground.

FPGA based totally reconfigurable 48 powerful TTL pindrivers provide H/L/pull_up/pull_down and read capability for each pin. Advanced pindrivers incorporate high-quality high-speed circuitry to deliver signals without overshoot or ground bounce for all supported devices. Pin drivers operate down to 1.8V so you'll be ready to program the full range of today's advanced low-voltage devices.

DATAMAN-848PRO performs on each programming module, device **insertion test** (wrong or backward position) and **contact check** (poor contact pin-to-socket) before it programs each device. These capabilities, supported by **overcurrent protection** and **signature-byte check** help prevent chip damage due to operator error.

DATAMAN-848PRO has the selftest capability, which allows the diagnostic part of software to thoroughly check the health of the each programming module.

DATAMAN-848PRO has a built-in protection circuit for eliminating the damage of programmer and/or programmed device due to environment or operator failure. All ZIF socket pins of DATAMAN-848PRO programmer are **protected against ESD** up to 15kV.

DATAMAN-848PRO performs programming **verification** at the **marginal level** of supply voltage, which, obviously, improves programming yield, and guarantees long data retention.

Various **socket converters** are available to handle devices in PLCC, SOIC, PSOP, SSOP, TSOP, TSSOP, TQFP, QFN (MLF), SDIP, BGA and other packages.

It is important to remember that in most cases new devices require **only a software update** because the DATAMAN-848PRO is based on the truly universal (DATAMAN-48PRO+) programmer. With our prompt service you can have new devices added to the current list within days!

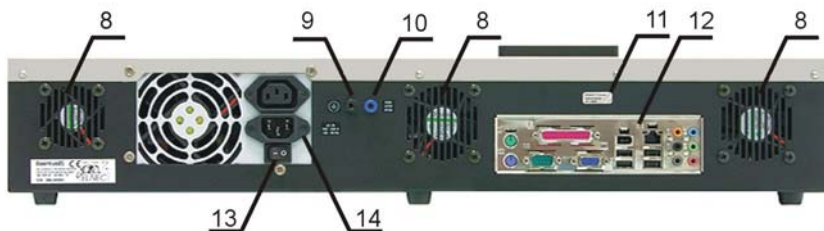
Advanced design of the DATAMAN-848PRO Stand-Alone multiprogramming system, including protective circuits, original brand components, and careful manufacturing and long burning-in periods allows us to provide a **three-year warranty** on parts and labor for the programmer (limited 25 000-cycle warranty on ZIF sockets). Although we take as much care as possible to integrate high quality components for the built-in computer, we can't provide the same level warranty as we get from the suppliers of computer parts. Therefore it is a limited warranty of one year for all computer parts such as motherboard, CPU, HD, etc.

DATAMAN-848PRO elements

- 1) 48 pin ZIF socket
- 2) work result LEDs
- 3) power/sleep LED of site
- 4) YES! Button
- 5) ISP connector
- 6) graphical control unit with touch screen
- 7) fan's grid



- 8) temperature controlled fans
- 9) banana jack for connection to ground
- 10) banana jack for ESD wrist straps connection
- 11) Windows XP Embedded serial number sticker
- 12) PC connectors – e.g. for display, keyboard, mouse...
- 13) power switch
- 14) power supply connector



Manipulation with the programmed device

After the selection of desired device for your work, you can insert it into the open ZIF socket (lever is up) and close socket (lever is down). The correct orientation of the device in ZIF socket is shown on the picture near the ZIF socket on the programmer cover. The programmed device must be removed from the socket when the BUSY LED is off.

Note: *Programmer protection electronics protect the target device and the programmer itself against either short or long-term power failures and, partly, against a PC failure. However, it is not possible to guarantee the integrity of the target device due to incorrect, user-selected programming parameters. Target device may not be destroyed by forced interruption of the control program (turn off programmer), but the content of programmed cells may remain undefined. Don't unplug the target device from the ZIF socket during work with device (BUSY LED on).*

In-system serial programming by DATAMAN-848PRO

Optimized advanced pindrivers deliver programming performance without overshoot or ground bounce for all device technologies. Pin drivers operate down to 1.8V so you'll be ready to program the full range of today's advanced low-voltage devices.

The ISP programming solution performs programming verification at the marginal level of supply voltage, which, obviously, improves programming yield, and guarantees long data retention.

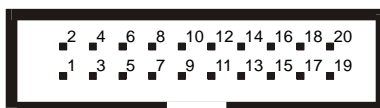
The ISP programming solution provides also the power supply for the target system.

This ISP programming solution provides very competitive price but excellent hardware design for reliable programming.

The software provides full information for ISP implementation: Description of ISP connector pins for currently selected chip, recommended target design around in-circuit programmed chip and other relevant information.

For general definition, recommendation and direction about ISP see section **Common notes / ISP** please.

Description of ISP connector



Front view at ISP connector.

Specification of ISP connector pins depends on the device which you want to work with. You can find it in the control SW for programmer (Pg4uw), menu **Device / Device Info (Ctrl+F1)**. Note: the ISP programming (ISP) option of respective device must be selected. It is indicated by (ISP) suffix after the name of selected device. These specifications correspond with application notes published by device manufacturers. Application notes can be found on www.dataman.com, **Support / Application Notes**.

Note: Pin no. 1 is signed by triangle mark on ISP cable connectors.

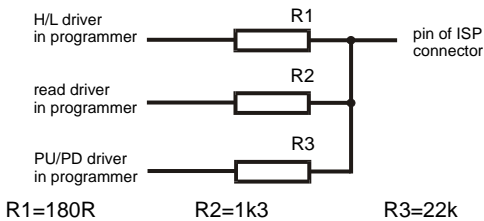


DATAMAN-848PRO ISP cable

Warnings:

- Use only **ISP cable from delivery package**. When you use other ISP cable (other material, length...), programming may become unreliable.
- **DATAMAN-848PRO can supply power to the** programmed device (pin 1 of ISP connector) and the target system (pin 19 and 20 of ISP connector) with some limitations. (see Technical specification / ISP connector).
- **DATAMAN-848PRO** applies programming voltage to target device and checks its value (target system can modify programming voltage). If the programming voltage is different from expected, no action with target device will be executed.

Note: H/L/read driver



Selftest and calibration check

Warning:

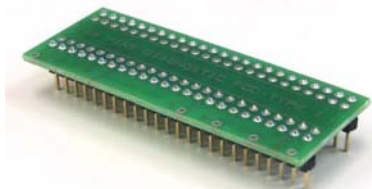
Selftest and calibration check can be run in engineering mode only.

This mode is available only when external display, keyboard and mouse are connected to DATAMAN-848PRO.

If you feel that your programmer does not react according to your expectation, please run the programmer (ISP connector's) selftest using Diagnostic POD (Diagnostic POD for ISP connectors #2), enclosed in the standard delivery package.

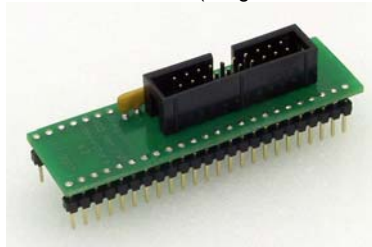
Selftest of programmer

- Insert **48 pin diagnostic POD - type I** into ZIF socket of the programmer. Take care about orientation of **48 pin diagnostic POD - type I** (see top side of POD).
- Run selftest of programmer in PG4UW (Programmer / Selftest plus).



Selftest of ISP connector

- Insert **Diagnostic POD for ISP connector #2** into ZIF socket of the programmer. Take care about orientation of **Diagnostic POD for ISP connector #2**.
- Interconnect the 20 pin connector of **Diagnostic POD for ISP connector #2** with the ISP connector of the programmer with the ISP cable included in delivery with the programmer package. Be sure that the pins are interconnected properly (i.e. 1-1, 2-2, ..., 20-20).
- Run selftest of ISP connector in PG4UW (Programmer / Selftest ISP connector...).



Technical specification

Specification (DATAMAN-848PRO multiprogramming system)

- 8x universal programming module (8x 48-pin DIL ZIF sockets and 8x ISP connector)
- operation result LEDs, LED power
- line power input 100-240VAC/60W max.
- banana jack for ESD wrist straps connection
- banana jack for connection to ground

Specification (PC system inside of programmer)

- Microsoft Windows XP Embedded operation system
- PC Intel Core 2 Duo 2.4 GHz
- 1024 MB RAM
- 160 GB HDD

SPECIFICATION (valid for each programming module)

HARDWARE

Base unit, DACs

- USB 2.0 high-speed compatible port, up to 480 Mbit/s transfer rate
- on-board intelligence: powerful microprocessor and FPGA based state machine
- three D/A converters for VCCP, VPP1, and VPP2, controllable rise and fall time
- VCCP range 0..8V/1A
- VPP1, VPP2 range 0..26V/1A
- autocalibration/selftest
- selftest capability

Socket, pindriver

- 48-pin DIL ZIF (Zero Insertion Force) socket accepts both 300/600 mil devices up to 48-pin
- pindrivers: 48 universal
- VCCP / VPP1 / VPP2 can be connected to each pin
- perfect ground for each pin
- FPGA based TTL driver provides H, L, CLK, pull-up, pull-down on all pindriver pins
- analog pindriver output level selectable from 1.8 V up to 26V
- current limitation, overcurrent shutdown, power failure shutdown
- ESD protection on each pin of socket (IEC1000-4-2: 15kV air, 8kV contact)
- continuity test: each pin is tested before every programming operation

ISP connector

- 20-pin male type with miss insertion lock
- 6 TTL pindrivers, provides H, L, CLK, pull-up, pull-down; level H selectable from 1.8V up to 5V to handle all (low-voltage) devices.
- 1x VCCP voltage (range 2V..7V/100mA) , can be applied to two pins

- programmed chip voltage (VCCP) with both source/sink capability and voltage sense
- 1x VPP voltage (range 2V..25V/50mA)
- target system supply voltage (range 2V..6V/250mA)
- ESD protection on each pin of ISP connector (IEC1000-4-2: 15kV air, 8kV contact)
- two output signals, which indicate state of work result = LED OK and LED Error (active level: min 1.8V)
- input signal, switch YES! equivalent (active level: max 0.8V)

DEVICE SUPPORT (valid for each programming module)

Programmer

- EPROM: NMOS/CMOS, 2708, 27xxx and 27Cxxx series, with 8/16 bit data width, full support for LV series
- EEPROM: NMOS/CMOS, 28xxx, 28Cxxx, 27EExxx series, with 8/16 bit data width
- Flash EPROM: 28Fxxx, 29Cxxx, 29Fxxx, 29BVxxx, 29LVxxx, 29Wxxx, 49Fxxx series, from 256Kbit to 32Mbit, with 8/16 bit data width, full support for LV series
- Serial E(E)PROM: 24Cxxx, 24Fxxx, 25Cxxx, 45Dxxx, 59Cxxx, 25Fxxx, 25Pxxx, 85xxx, 93Cxxx, NVM3060, MDAXxx series, full support for LV series
- Configuration (EE)PROM: XCFxxx, XC17xxxx, XC18Vxxx, EPCxxx, AT17xxx, 37LVxx
- 1-Wire E(E)PROM: DS1xxx, DS2xxx
- PROM: AMD, Harris, National, Philips/Signetics, Tesla, TI
- NV RAM: Dallas DSxxx, SGS/Inmos MKxxx, SIMTEK STKxxx, XICOR 2xxx, ZMD U63x series
- PLD: Altera: MAX 3000A, MAX 7000A, MAX 7000B, MAX 7000S, MAX7000AE, MAX II
- PLD: Lattice: ispGAL22V10x, ispLSI1xxx, ispLSI1xxxEA, ispLSI2xxx, ispLSI2xxxA, ispLSI2xxxE, ispLSI2xxxV, ispLSI2xxxVE, ispLSI2xxxVL, LC4xxxB/C/V/ZC, M4-xx/xx, M4A3-xx/xx, M4A5-xx/xx, M4LV-xx/xx
- PLD: Xilinx: XC9500, XC9500XL, XC9500XV, CoolRunner XPLA3, CoolRunner-II
- other PLD: SPLD/CPLD series: AML, Atmel, AMD-Vantis, Gould, Cypress, ICT, Lattice, NS, Philips, STM, VLSI, TI
- Microcontrollers 48 series: 87x41, 87x42, 87x48, 87x49, 87x50 series
- Microcontrollers 51 series: 87xx, 87Cxxx, 87LVxx, 89Cxxx, 89Sxxx, 89LVxxx, all manufacturers, Philips LPC series
- Microcontrollers Intel 196 series: 87C196 KB/KC/KD/KT/KR/...
- Microcontrollers Atmel AVR: AT90Sxxxx, ATtiny, ATmega series
- Microcontrollers Cypress: CY7Cxxxxx, CY8Cxxxxx
- Microcontrollers ELAN: EM78Pxxx
- Microcontrollers MDT 1xxx and 2xxx series
- Microcontrollers Microchip PICmicro: PIC10xxx, PIC12xxx, PIC16xxx, PIC17Cxxx, PIC18xxx, PIC24xxx, dsPIC series
- Microcontrollers Motorola (Freescale): 68HC05, 68HC08, 68HC11, HCS08, HCS12 series
- Microcontrollers Myson MTV2xx, 3xx, 4xx and 5xx series
- Microcontrollers National: COP8xxx series
- Microcontrollers NEC: uPD78xxx series
- Microcontrollers Novatek: NT68xxx series
- Microcontrollers Scenix (Ubicom): SXxxx series
- Microcontrollers SGS-Thomson: ST6xx, ST7xx, ST10xx, STR7xx series
- Microcontrollers TI: MSP430 and MSC121x series
- Microcontrollers ZILOG: Z86/Z89xxx and Z8xxx series

- Microcontrollers other: EM Microelectronic, Fujitsu, Goal Semiconductor, Hitachi, Holtek, Princeton, Macronix, Winbond, Infineon(Siemens), NEC, Samsung, Toshiba, ...

Notes:

- For all supported devices see actual **Device list** at www.dataman.com

Programmer, through ISP connector

- Serial E(E)PROM: IIC series, MW series, SPI series, KEELOQ series, serial data Flash, PLD configuration memories
- Microcontrollers Atmel: AT89Sxxx, AT90Sxxxx, ATtiny, ATmega series
- Microcontrollers Cypress: CY8C2xxxx
- Microcontrollers Elan: EM78Pxxx, EM6xxx series
- Microcontrollers EM Microelectronic: 4 and 8 bit series
- Microcontrollers Microchip PICmicro: PIC10xxx, PIC12xxx, PIC16xxx, PIC17xxx, PIC18xxx, PIC24xxx, dsPIC series
- Microcontrollers Motorola/Freescale: HC11 series, HC908 series (both 5-wire, All-wire), HCS08, HCS12
- Microcontrollers NEC: uPD7xxx series
- Microcontrollers Philips: LPC2xxx series, LPC series, 89xxx series
- Microcontrollers Scenix (Ubicom): SXxxx series
- Microcontrollers TI: MSP430 (both JTAG and BSL series), MSC12xxx series
- PLD: Lattice: ispGAL22xV10x, ispLSI1xxxEA, ispLSI2xxxE, ispLSI2xxxV, ispLSI2xxxVE, ispLSI2xxxVL, M4-xx/xx, M4LV-xx/xx, M4A3-xx/xx, M4A5-xx/xx, LC4xxxB/C/N/ZC
- Various PLD (also by JAM player/JTAG support):
- Altera: MAX 3000A, MAX 7000A, MAX 7000B, MAX 7000S, MAX 9000, MAX II
- Xilinx: XC9500, XC9500XL, XC9500XV, CoolRunner XPLA3, CoolRunner-II

Notes:

- For all supported devices see actual **Device list** at www.dataman.com.

Package support

- support all devices in DIP with default socket
- package support includes DIP, SDIP, PLCC, JLCC, SOIC, SOP, PSOP, SSOP, TSOP, TSOPII, TSSOP, QFP, PQFP, TQFP, VQFP, QFN (MLF), SON, BGA, EBGA, FBGA, VFBGA, UBGA, FTBGA, LAP, CSP, SCSP etc.
- support devices in non-DIP packages up to 48 pins with universal adapters

Programming speed

Device	Size [bits]	Operation	Time
M50FW080 (parallel Flash)	100000Hx8 (8 Mega)	programming and verify	22 sec
MX28F640C3BT (parallel Flash)	400000Hx16 (64 Mega)	programming and verify	57 sec
K9F1G08U0M (parallel NAND Flash)	8400000Hx8 (1 Giga)	programming and verify	229 sec
AT45D081 (serial Flash)	108000Hx8 (16 Mega)	programming and verify	36 sec
AT89C51RD2 (microcontroller)	10000Hx8	programming and verify	15 sec
PIC18F452 (microcontroller)	4000Hx16	programming and verify	4 sec

Conditions:

PG4UW version 2.39a

Notes:

- *It is important to know, we always use random number patterns for programming speed tests. Some of our competitors use a "sparse" pattern, where only some non-blank data is programmed or they use data with only a few 0 bits (FE, EF, etc.). This deceptive approach can "decrease" programming times considerably. If you plan to compare, ask always which pattern they use.*
- *The programming speed depends on the PC speed only slightly.*

SOFTWARE

- **Algorithms:** only manufacturer approved or certified algorithms are used.
- **Algorithm updates:** software updates are available regularly, approx. every 4 weeks, free of charge (Internet download). **OnDemand** version of software is available for high priority chip support and/or bugs fixes. Available nearly same day.
- **Main features:** revision history, session logging, on-line help, device and algorithm information.

Device operations

- **standard:**
 - intelligent device selection by device type, manufacturer or fragment of part name
 - automatic ID-based selection of EPROM/Flash EPROM
 - blank check, read, verify
 - program
 - erase
 - configuration and security bit program
 - illegal bit test
 - checksum
 - interpret the Jam Standard Test and Programming Language (STAPL), JEDEC standard JESD-71
 - interpret the VME files compressed binary variation of SVF files
- **security**
 - insertion test, reverse insertion check
 - contact check
 - ID byte check
- **special**
 - production mode (automatic start immediately after device insertion)
 - lots of serialization modes (more types of incremental modes, from-file data , custom generator mode)
 - statistics
 - count-down mode

Buffer operations

- view/edit, find/replace
- fill/copy, move, byte swap, word/dword split
- checksum (byte, word)
- print

File load/save

- no download time because programmer is PC controlled
- automatic file type identification/recognition

Supported file formats

- unformatted (raw) binary
- HEX: Intel, Intel EXT, Motorola S-record, MOS, Exormax, Tektronix, ASCII-SPACE-HEX, ASCII HEX
- Altera POF, JEDEC (ver. 3.0.A), e.g. from ABEL, CUPL, PALASM, TANGO PLD, OrCAD PLD, PLD Designer ISDATA, etc.
- JAM (JEDEC STAPL Format), JBC (Jam STAPL Byte Code), STAPL (STAPL File) JEDEC standard JESD-71
- VME (ispVME file VME2.0/VME3.0)

GENERAL

- operating voltage AC 100-240V, 50-60Hz
- power consumption max. 300W active
- dimensions 625x465x115 mm (24.6x18.3x4.5 inch)
- weight (programmer) 14.9kg (32.85 lbs)
- temperature 5°C ÷ 35°C (41°F ÷ 95°F)
- humidity 20%..80%, non condensing

Package included

Standard accessories

- DATAMAN-848PRO programmer
- diagnostic POD for ZIF socket selftest of the programmer (1x)
- diagnostic POD for ISP connector selftest of the programmer (1x)
- ISP cable (8x)
- anti-dust cover for ZIF socket (8x)
- user manual
- software
- registration card
- calibration test report
- transport case

Bonus pack:

- ESD wrist strap with cord and banana plug
- Vacuum pen

Additional services

- Keep Current.
- AlgOR
- free technical support (phone/fax/e-mail).
- free lifetime software update via Web site.

Programming a device

DATAMAN-848PRO can operate in two modes:

Engineering mode	for creating a project
Production mode	for mass production

Engineering mode

Warning:

This mode is available only when external display, keyboard and mouse are connected to DATAMAN-848PRO.

To switch to Engineering mode use **File / Switch to Engineering mode**.

This part of the software is focused on the quick and easy preparation of the project file for use in the production mode of the control software.

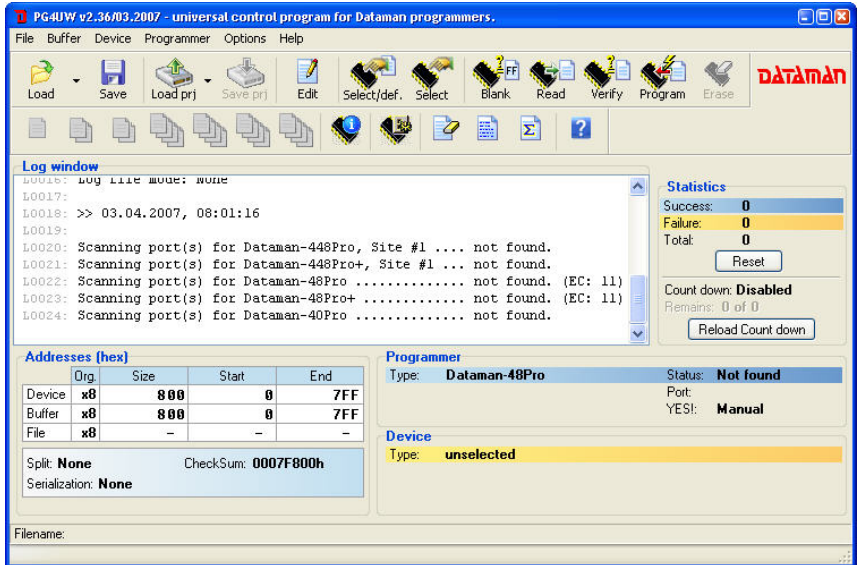
Each programming module is driven by an easy-to-use control program with pull-down menu, hot keys and on-line help. Selecting of the device is performed by its class, by manufacturer or simply by typing a fragment of vendor name and/or part number. It is the same time-proven software, as is used for other Dataman single-site programmers. Engineers can use all properties of this software and can make a project for mass production.

Standard device-related commands (read, blank check, program, verify, erase) are boosted by some test functions (insertion test, connection check, signature-byte check), and some special functions (autoincrement, production mode - start immediately after insertion of chip into socket).

All known data formats are supported. Automatic file format detection and conversion are done during loading of file. It is possible to use Jam files (JEDEC standard JESD-71) and VME files

The rich-featured auto-increment function enables one to assign individual serial numbers to each programmed device - or simply increments a serial number, or the function enables one to read serial numbers or any programmed device identification signatures from a user created file.


The software also provides a lot of information about programmed device. As an example, the **drawings of all available packages**, explanation of **chip labeling** (the meaning of prefixes and suffixes on the chips).

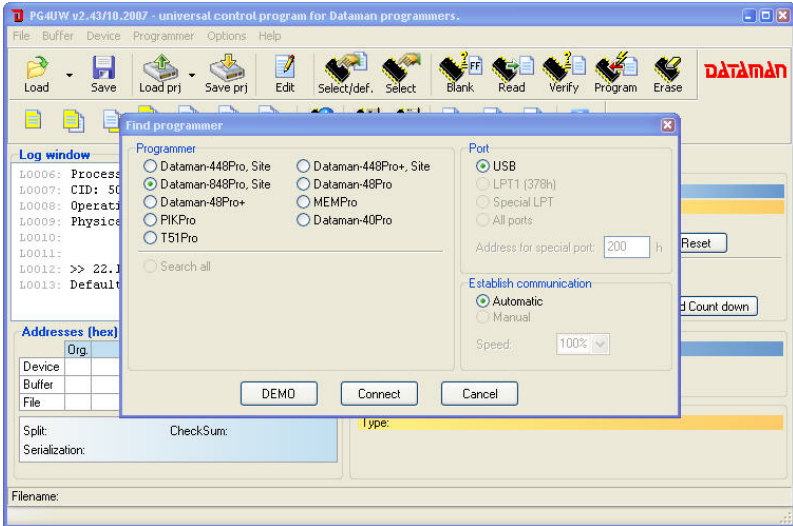


Make a project

1. Connect external display, keyboard and mouse to PC connectors on back side of programmer Turn on programmer.

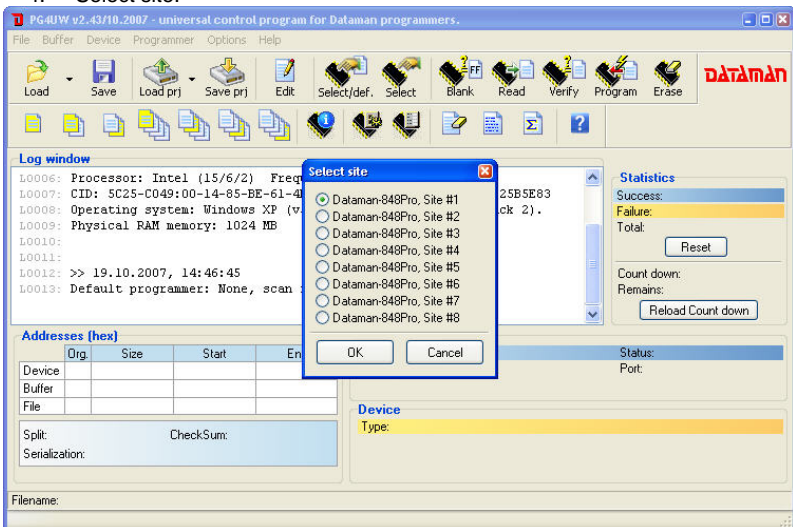


2. Run the control program: double click on  icon.
3. Find DATAMAN-848PRO Site (programmer): <Ctrl+F> or right click on panel **Programmer**




Select DATAMAN-848PRO, Site and then click on “Connect” button.

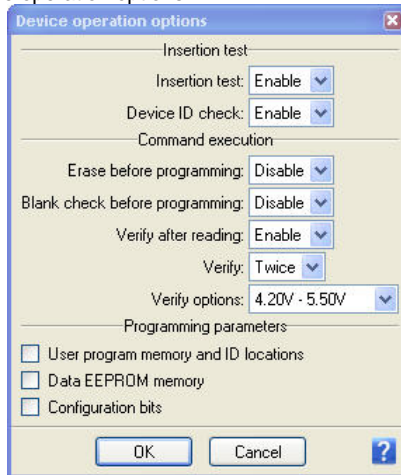
4. Select site.



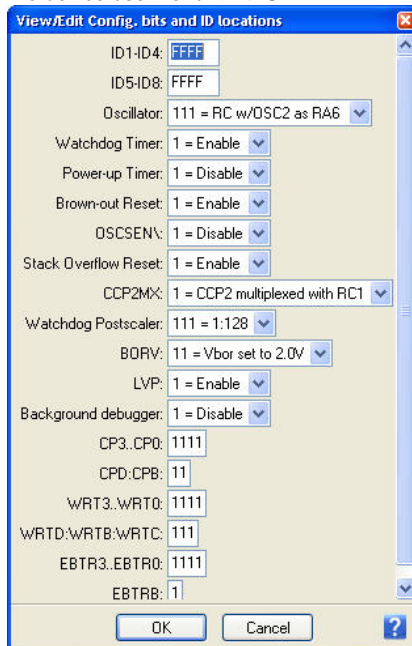
Select desired DATAMAN-848PRO Site# and then click on “OK” button

5. Select device: click on icon and select desired device

6. Load data into buffer from file: click on  icon.
7. Set Device operation options




8. To customize device use menu **<Alt+S>**



Set desired settings for the device and then click on "OK" button

Note: Menu Device operation options and **<Alt+S>** depend on the selected device.



9. Save project: click on  and select destination folder, write a description of project etc.

You can make a project on other DATAMAN programmers (DATAMAN-48PRO+...) too. For more details see Help for PG4UW or "Dataman PRO series_manual". The latest manual may be found at www.dataman.com.

Production mode

Warning: External display, keyboard and mouse not needed in this mode.

This part of the software is focused on the easy monitoring of high-volume production operations via graphical control unit with touch screen.

The user can control the following basic operations:

- load project file
- connect/disconnect programmer sites
- select desired device master operation (blank check, verify, program, erase)
- start/stop device operation on connected programmer sites
- set some advanced options to customize available settings, for example Automatic YES! Function
- create Job report
- create Problem report
- copy project file(s) from external drive (for example from network drive, USB key etc.) to the standalone's local [Projects] folder
- see the progress of device operation, including statistics information, serialization...

Step by step instruction

Starting Stand-Alone multiprogramming system

1. **Check** if the power switch placed at back side of programmer, near power supply connector is on position **0**.
2. **Plug** the power cord into the programmer power supply connector and turn on the programmer by the power switch placed at back side of programmer.
3. When the built-in computer is turned on the **operating system** will start booting-up, cooling fans should start to work, and **"Please Wait"** screen should be displayed on graphical control unit.
4. Starting of the operating system can take some time, normally this time is shorter than 1 minute.
5. After the operating system has successfully started, the **Pg4uwMC** control program will start **automatically**. When the Pg4uwMC is ready to work the **"Welcome** screen" is displayed on graphical control unit.
6. Click the **OK** button on **"Welcome"** screen to continue. The main screen with menus and **Status** panel should appear on graphical control unit.

Checking if the sites are ready to be connected

7. When **first starting** Stand-Alone multiprogramming system, or when error message "**Programmer Sites not found**" is displayed, then programmer software must be reinitialized by action "**Search for Programmers...**" available in menu "**Programmer / Search for Programmers...**".
8. In dialog Search for Programmers use button "**Search**" to search for present programmer sites. The result of search will be displayed in table Search results in Search dialog. When programmer sites are successfully found, then programmer type and its serial number is show in the table Search result. Detected programmer can be accepted by pressing/touching **Accept**. If no complete programmer was found, then "**No Programmers found**" message will be displayed in table Search results and button **Accept** will be disabled.
9. If search result is "**No Programmers found**", please try to turn off Stand-Alone programmer, by menu "**File / Shut down computer**", turn off the power button on the back Side of programmer, **wait for 15 seconds** or more and start programmer again. If the search result is still "No Programmers found", please refer to troubleshooting documentation.

Starting programmer sites

10. Each programmer site uses its own **hidden** control application **Pg4uw**.
11. To start the hidden applications of control programmer sites, use menu "**Programmer / Connect Sites**".
12. The "**Connecting sites**" indicator is displayed during connection of sites. Additional information about site connection progress is displayed for each site in panel Status on main screen.
13. Programmer sites are numbered from #1 to #8 in direction of physical placement of programmer sites from left to right.
14. When connection process of programmer sites is complete, indicator "**Connecting Sites**" will be hidden. Panel Status will contain information about each site.

Loading project file

15. When site status after connection is "**Ready**" or "**No project file is loaded**" user can begin the Load project operation accessible from menu **File / Load project**. The project file can be loaded from default directory **[Projects]** or from any other location, for example from USB key. For more details about Load project, refer to the chapter "Menu File" and Load project. When Load project operation is **successfully** done for all Sites, the "**Ready**" status must be displayed in panel Status on touch screen for all connected Sites. If there are some Sites with different status, use troubleshooting documentation to resolve the problem.

Selection of predefined device operation

16. Use menu "Device / Predefined operation" to select device Master operation.
Following Master operations are available:
Blank check
Verify
Program
Erase
For more details about predefined device operations, see chapter **Menu Device / Predefined operation**.

Insertion of devices in programmer sockets and start device operations

17. Insert devices into programmer sockets and press **Run <operation>** button on touch screen. <operation> means predefined operation, for example when

predefined operation is "Program device", the caption of button Run will be "Run Program".

18. Selected device operation including sub-operations that are part of predefined device operation will **start**. Progress of operations is displayed in panel status for each programmer site.

You can use some special features of Stand-Alone multiprogramming system, for example Count down or Statistics.

Software

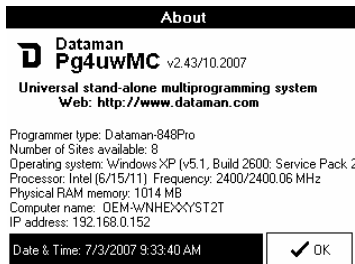
Detailed description of Graphics user interface with touch screen

Please Wait screen



Please Wait screen is displayed on standalone's built-in LCD screen as the first screen after turning-on power. The screen is shown during booting up of operating system and starting of standalone control software Pg4uMC.

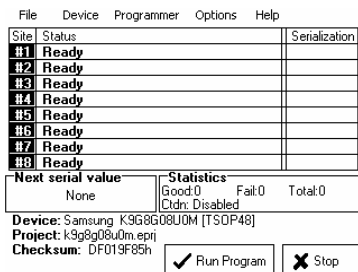
Welcome screen (About screen)



Welcome screen is displayed on Stand-Alone build-in LCD screen after successful starting of standalone control software. The screen can also be displayed by using menu command **Help / About** for more information see **Help / About**.

Welcome screen can be closed by clicking on button **OK**.

LCD main screen



Main screen consists of following parts:

- Menu / File Device Programmer Options Help |
- Table with information about programmer sites (site and serialization status)
- Next serial value
- Statistics
- Recently selected device name
- Recent project name
- Checksum of data stored in data buffer for currently selected device
- Run Button... (... can be operation name, for example Program, Verify, Erase)
- Stop Button

Menu / File Device Programmer Options Help |

Each menu item represents one menu command. For detailed information about menu commands, refer to menu commands description chapter.

Table with information about programmer sites (site and serialization status)

Table contains key information about current status of programmer sites and serialization information for each Site. If serialization is not used, the Serialization column remains empty. Sites that are not connected, have '-' displayed in the Status column. Connected Sites have their Status displayed. Following are typical values:

- Ready means the programmer site is connected and ready to start any operation
- Present special status of connected Site, means the site is connected but it is not selected (checked in dialog Select Sites). User selected device or project operations will not run on (unselected) Sites. User can set Site selection in dialog 'Select Sites' accessible by menu command **Programmer / Select Enabled Sites**.
- No project file is loaded means the Site is successfully connected but no project file is loaded. It also means that no device is selected. The recommended action is "Load project".
- other text describes current status of Site(s), for example:
 - 'Loading data from disk to buffer'
 - 'Programming device... 85%'
 - 'Programming device... OK'
 - 'Please insert a new device into socket'

Next serial value

When serialization is active, the panel displays current serialization mode and serialization number or label that will be used for next device programmed. Recent serial numbers used for each device are displayed in table Site and serialization status in column Serialization.

Statistics

Panel contains information about the number of device operations processed and actual count down status. For more details see Statistics dialog (menu **Options / Statistics**).

Recently selected Device name

Manufacturer and name of recently selected devices.

Recent Project name

Currently loaded project file name.

Checksum of data stored in data buffer for currently selected device.

Button Run... (... can be operation name, for example Program, Verify, Erase)

Click on button Run... will start selected device operation for all connected programmer sites. Button can be used when no device operation is running on any programmer site.

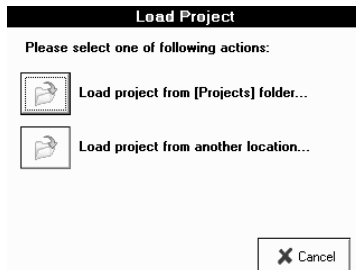
Button Stop

Click on button Stop will stop executing of currently running device operation on all connected programmer sites.

Menu File

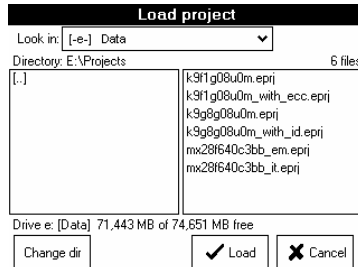
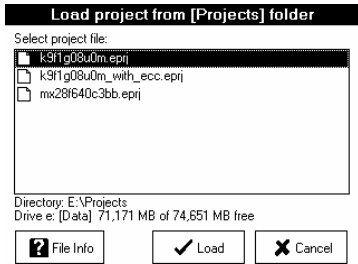
File / Load project

This menu command opens dialog 'Load project', where user can choose, from which location the project file has to be loaded and load selected project.



Two options are available:

1. Load project from [Projects] folder...
2. Load project from another location...



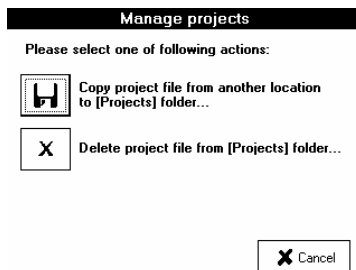
When option 1 is selected, dialog with list of project files present in **[Projects] folder** will appear. User can select desired project and load the project by clicking on **'Load'** button. Dialog can be closed by **'Cancel'** button. Also basic information about selected project file can be displayed by clicking **'File info'** button.

When option 2 is selected, a dialog with list of project files at specified drive and folder will appear. User can select desired drive, folder and project file and load the project by clicking on **'Load'** button. **'Change dir'** button is used to change current directory to directory selected in **'Directory'** list on the left side of dialog. When folder **[.]** is selected, **'Change dir'** button jump up from current directory one level (one folder) up.

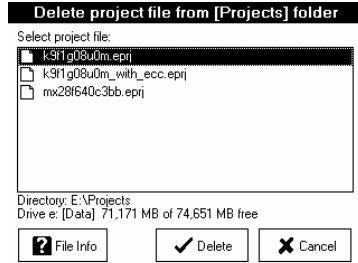
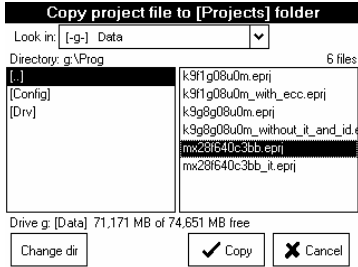
Note: The drive combo box is automatically refreshed each time it is dropped down. It is useful for loading project files from USB key which can be plugged temporarily into USB port of standalone programmer and consequently new drive letter assigned with USB key will appear in list of available drives.

File / Manage projects

Manage project dialog offers two options:



1. Copy project file from another location to [Projects] folder...
2. Delete project file from [Projects] folder...

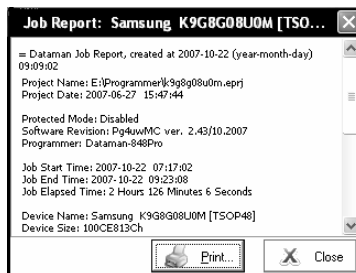


When option 1 is selected, the dialog with list of project files at specified drive and folder will appear. User can select desired drive, folder and project file and copy the selected project to the **[Projects]** folder by clicking on **'Copy'**. **'Change dir'** button is used to change current directory to directory selected in **'Directory'** list on the left side of dialog. When folder **[.]** is selected, **'Change dir'** button jumps from current directory one level (one folder) up.

Note: The drive combo box is automatically refreshed each time it is dropped down. It is useful for loading project files from USB key, which can be plugged temporarily into USB port of standalone programmer and consequently the new drive letter assigned with USB key will appear in list of available drives.

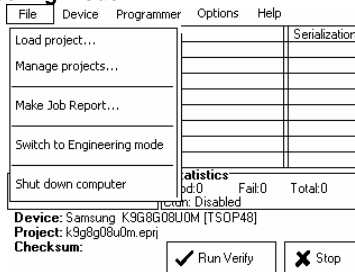
When option 2 is selected, the dialog with a list of project files present in **[Projects]** folder will appear. User can select desired project and delete selected project by clicking on **'Delete'** button. The dialog can be closed by **'Cancel'** button. Also basic information about selected project file can be displayed by clicking **'File info'** button.

File / Make Job Report...



When this menu command is selected, a **Job Report** will be created and displayed in the Job Report window. Before displaying the **Job Report**, the information message is displayed. The information message also contains information about the file name to which the Job Report will be saved.

File / Switch to Engineering mode



Command is used to start Pg4uw control program in **Engineering mode**. In this mode, user can use Pg4uw software to select any device from the list of supported devices, set options for the device, load data files for device, test the device operations on any programmer site and create a project file which can be used in production mode. More information about Engineering mode is available in chapter Engineering mode.

To switch back to production mode just **close Pg4uw** control program and run program Pg4uwMC by double-clicking on Pg4uwMC icon on the Desktop.

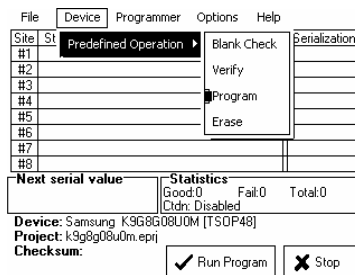
Note:

Engineering mode requires connection of external VGA monitor, keyboard and mouse. Do not use this menu option, without these peripherals connected and working.

File / Shut down computer

Command is used to close control program and to shut down built-in computer. It is similar, to command "Shut down" in Microsoft Windows operating systems.

Menu Device



Device / Predefined operation

This menu allows user to select device Master operation. Following Master operations are available:

- Blank check
- Verify
- Program
- Erase

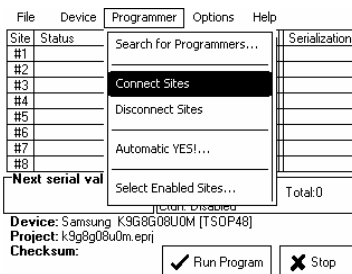
Each Master operation can consist of a sequence of one or more partial operations, for example Program device operation can consist for the following sub-operations:

- 1.Erase
- 2.Program
- 3.Verify

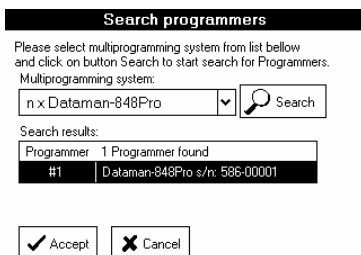
Selection of sub-operations is stored in Project file. For details about project file creation and usage, refer to Engineering mode chapter.

Preselected device operation can be started by button Run <operation_name> displayed on main screen.

Menu Programmer



Programmer / Search for programmers...



Menu command displays the dialog “**Search programmers**”, which is used to reinitialize software configuration, and to re-find available programmer sites. There is no need to use this menu command in normal operation. Situations, when the command is useful are:

1. when first starting DATAMAN-848PRO Stand-Alone multiprogramming system
2. when error message “Programmer Sites not found” is displayed

In the dialog “**Search Programmers**” use button “**Search**” to search for attached programmers. The result of search will be displayed in table **Search results** in Search dialog. When programmer sites are successfully found, the result shows the programmer type, and allows you to accept new settings by button **Accept**. Otherwise “**No Programmers found**” message will be displayed in table **Search results** and button **Accept** is disabled.

If search result is **“No Programmers found”**, please try to turn off Stand-Alone programmer, by menu **“File / Shut down computer”**, turn off the power button on the back side of programmer, wait for 15 seconds or more and start programmer again. If the search result is still **“No Programmers found”**, please refer to troubleshooting documentation.

Programmer / Connect Sites

Menu command starts control applications for all available programmer sites. The **“Connecting Sites”** indicator is displayed during connecting of sites. Additional information about site connection progress is displayed for each site in the **Status** panel on the main screen.

Programmer sites are numbered from #1 to #8 in direction of physical placing of sites from left to right.

When connection process is complete, indicator **“Connecting Sites”** will be hidden. The **Status** panel will contain information about each site. Following status information are most common:

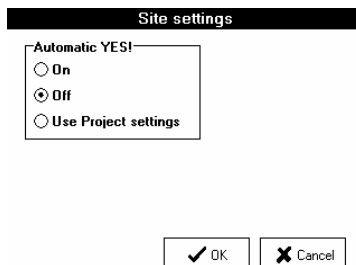
- Ready means the programmer site is connected and ready to start any operation
- Present special status of connected site, means the site is connected but it is also not selected (checked in dialog Select sites). User selected device or project operations will not run on Present (unselected) sites. User can set site selection in dialog **‘Select sites’** accessible by menu command **‘Programmer / Select Enabled sites’**.
- No project file is loaded – means the site is successfully connected but no project file is loaded. It also means that no device is selected. The recommended action is **“Load project”**.
- other text describes current status of site(s)

Programmer / Disconnect Sites

Menu command is used to disconnect all programmer sites and close Programmer sites control applications. The command will apply only if no device operation is currently running on any of connected sites. The command does not close main control program. Also Stand-Alone programmer computer remains running.

Programmer / Automatic YES!...

Command displays dialog **“Site settings”** with Automatic YES! options.



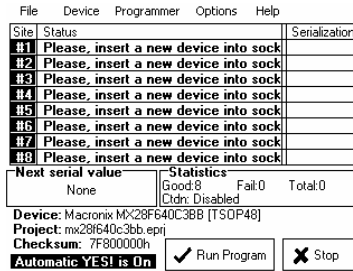
Three modes of Automatic YES! function are available:

- On Automatic YES! Is always On
- Off Automatic YES! Is always Off
- Use Project settings Automatic YES! setting depends on relevant settings stored in project file

When Automatic YES! mode is **On**, programmer sites are scanning their device sockets after device operation is completed. The control program can detect removing of programmed device and insertion of new device and afterwards automatically start (repeat) recent operation on new device. So operator does not need to press any key or button, to program next device.

When Automatic YES! mode is **Off**, operation on next device can be started manually, by pressing the YES! **button** near each programmer site. Each programmer site has its own YES! button.

Status of the active Automatic YES! function is displayed on the bottom left side of LCD main screen with label Automatic YES! Is On by following:

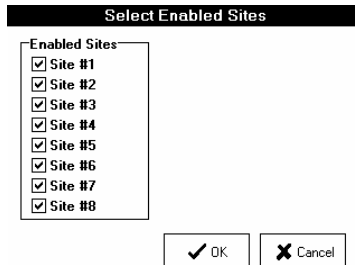


If the Automatic YES! function is Off, no label about Automatic YES! is displayed.

For more details about Automatic YES! feature see documentation chapter **Programmer / Automatic YES!**.

Programmer / Select Enabled Sites...

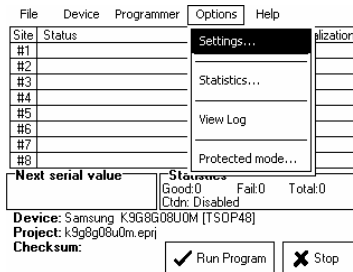
Command displays dialog "Select Enabled Sites".



This dialog is used to select sites that have to be used. Each site is represented by one check box. If the check box #n is checked, it means the site #n is selected, and device

operations will run on it. If the check box #n is unchecked, the site #n is unselected, so no device operations will run on the Site. The sites can be set as selected or unselected anytime needed, except during running device operation.

Menu Options



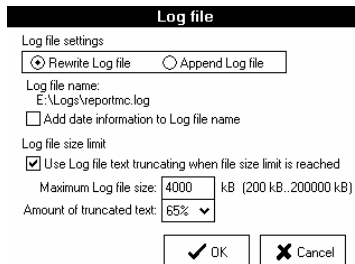
Options / Settings...

Command displays dialog **“Settings”** with list of options, user can choose from and set their properties and/or settings.



Log file...

Log file settings screen looks as following:



Log file is text file containing information about Pg4uWMC control program operation flow, which means information about loading project files, device operation types and device operation results.

Main **Log file** name in Stand-Alone programmer can not be modified by user, it has defined value **E:\Logs\reportmc.log** where drive E: is placed on built-in disk of Stand-Alone programmer.

Multiprogramming system generates a few Log files. One main Log file for program Pg4uwMC and Log files for each of the running Programmer Sites. Each site has its own Log file. The name of the site's Log file has the same prefix as the name of the Log file specified in the edit box Log file. The file name prefix is followed by the number of the site in the form of **_#<Snum>**. All Log files are placed into the folder **E:\Logs\reportmc.log** where drive E: is placed on built-in disk of standalone programmer.

The Log file names used are:

reportmc.log	Pg4uwMC main Log file
reportmc_#1.log	Site's #1 Log file
reportmc_#2.log	Site's #2 Log file
reportmc_#3.log	Site's #3 Log file
and so on...	

Following options can be set for Log file creation:

- option **Append Log file** sets usage of Log file. Log file will be created after the first restart of Pg4uwMC. For all following executions of Pg4uwMC, the existing Log file will be preserved and new data will be appended to the existing Log file.
- option **Rewrite Log file** sets usage of Log file. Log file will be created after the first restart of Pg4uwMC. For all other following executions of Pg4uwMC, the existing Log file will be rewritten and new Log file will be created. Data from previous Log file will be deleted.
- Checkbox **Add date information to Log file name** allows user to choose additional date information into Log file name. When the checkbox is checked, the program automatically adds current date string into Log file namethrough the following rules:

If log file name has format:

<log_file_name>.<log_file_extension>

The name with added date will be:

<log_file_name><-yyyy-mmm-dd>.<log_file_extension>

The new part representing the date consists of yyyy - year, mmm - month and dd - day.

Example:

*Log file name is **E:\Logs\reportmc.log***

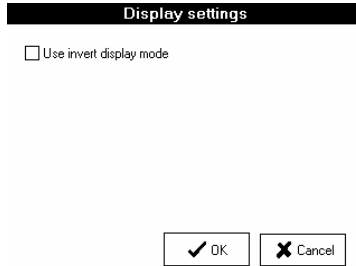
The final log file name with added date will look like this (July, 7th, 2007):

E:\Logs\reportmc-2007-jul-07.log

Advanced options about Log file size limit:

- option **Use Log file text truncating when file size limit is reached** - when checked, the Log file size limit is on. It means that when Log file size reaches specified value, the part of text included in Log file will be truncated. When the option is unchecked, the size of Log file is unlimited, respectively is limited by free disk space only.
- option **Maximum Log file size** specifies the maximum size of Log file in kBytes.
- option **Amount of truncated text** specifies the percentage of Log file text, which will be truncated after Maximum Log file size is reached. The higher value means more text will be truncated (removed) from Log file.

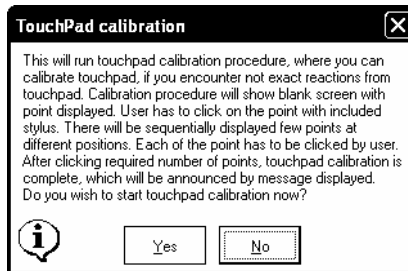
Display settings...



Display settings dialog contains check box **“Use invert display mode”**. When the checkbox is checked, LCD screen will be displayed in **“inverted”** mode. Otherwise it will be displayed in normal mode.

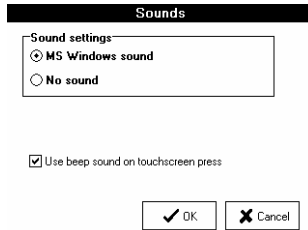
Touchpad calibration...

Command is used for calibration of built-in touch pad, part of built-in LCD touch screen.



The calibration of touchpad is recommended if you encounter unexpected reactions from touchpad. If user confirms dialog about touchpad calibration with Yes button, calibration procedure will start. Calibration procedure will show blank screen with point displayed. User has to click on the point with stylus. There will be sequentially displayed few points at different positions. Each of the point has to be clicked by user. After clicking required number of points, touchpad calibration is complete, which will be announced by information message displayed.

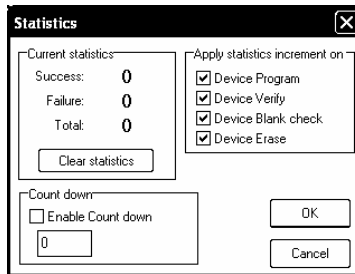
Sounds...



Dialog **Sounds** settings allows user to select the sound mode of program. Program generates sounds after some activities, e.g. activities on device (programming, verifying, reading, etc.). Program generates sound also when warning or error message is displayed. User can now select sound from MS Windows system sound (requires installed sound card), PC speaker or No sound.

The check box “Use beep sound on touch screen press” allows to switch beep sound on or off. When the checkbox is checked, beep sound will be generated on each touch screen press, that software detects. Otherwise no beep sound will be generated.

Options / Statistics...



Command displays dialog “**Statistics**”. Statistics gives the information about actual count of device operations, which were proceeded on selected type device. If one device is corresponding to one device operation, e.g. programming, the number of device operations will be equal to the number of programmed devices. Statistics dialog contains following options:

Check boxes: Program, Verify, Blank and Erase which define operations, after which statistics values increment.

Any selected and performed device operation will increment the **Total** counter and one of the **Success** or **Failure** counters depending on device operation result (success or failure).

A combination of partial operations is counted as one operation only. For example, a Read operation including Verify after Read is one operation. A Program operation including Erase and/or Verify operations is counted as one operation.

The next function of statistics is **Count down**. Count down allows checking of the number of device operations, and then the number of devices, on which device

operations have to be done. After each successful device operation the value of count down counter is decremented. Count down has user defined start number for devices to do. When count down value reach zero, it means, the specified number of devices is complete and a user message about complete count down will be displayed.

Check box **Enable Count down** sets Count down activity (enable or disable). Edit box following the Enable Count down check box defines initial number of count down counter, from which count down starts.

Actual statistics values are displaying in main window of control program in Statistics panel.

Statistics panel contains:

three statistics values Good, Fail, Total.
two Count down information values Ctdn status and value.

Meaning of the values is:

Good - number of operations which where successfully completed

Fail - number of operations which where not successfully completed

Total - number of all operations

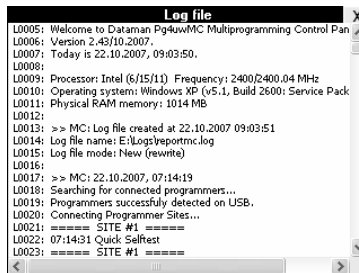
Ctdn - informs about Count down activity (En (enabled) or Disabled)

Remains - informs about remaining number of device operations to do

Notes: *When project file is loaded all statistics values are set to zero and Ctdn is set to Disabled.*

For multiprogramming Pg4uwMC software, the statistics information is also saved to Job Summary report.

Options / View Log...



Command displays content of current **Log window**. At top right corner is the button [x], which is used for closing the Log window and displaying of main screen.

Options / Protected mode...

Protected mode is **special mode** of the program. When the program is in **Protected mode**, there are disabled certain program operations and commands. **Protected mode** is used to prevent the operator from modifying program or device settings due to insignificance. Protected mode is suitable especially for the programming of a large amount of the same type of devices.

Protected mode can be activated by this menu option or by loading project file that has activated **Protected mode**.

Protected mode settings are saved to configuration **.ini** file of Pg4uwMC. During next start of program Pg4uwMC the Protected mode settings from **.ini** file are used.

When **Protected mode** menu command is used, **password** dialog will appear. User has to enter password twice to confirm the password is correct. After successful password confirmation program switches to **Protected mode**.



There is also available one special option - **Keep "Load project" operation allowed**. The option is set to disabled at default - it means the Load project operation button and menu will be disabled when Protected mode is active.

If the option is enabled (checked), the Load project operation button and menu will be allowed in Protected mode.

To switch program from **Protected mode** back to **Normal mode**, use the menu command **Options / Normal mode**. The "Password required" dialog appears. User has to enter the same password as the password entered during switch to Protected mode.

When Protected mode is active, the label "Protected mode" is visible near the top of Status table of main LCD screen.

Notes: Sometimes when Protected mode is switched from active state to inactive state (Normal mode), some commands (for example command "Load project") may remain disabled. This can be resolved by clicking on button Stop.

When user forgot the password to turn off Protected mode, then protected mode can be turned off by administrator, by entering Administrator password. Administrator login is not necessary.

Menu Help

Help / Index

Menu command displays short help on built-in touch screen. The short help contains brief information about menu commands and basic operations with usage of touch screen.

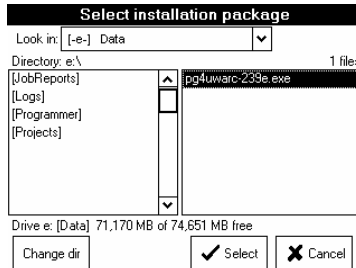
Help / Problem report...

Menu command **"Create problem report"** is used for writing more particular diagnostic information to **Log window** and consequently copy **Log window** content to problem report file. Problem report is useful when an error occurs in the control program or

programmer and that the user can not resolve and he must contact programmer manufacturer. In this case when customer send message to manufacturer about his problem it is good to send also problem report. Problem report can help manufacturer to localize the reason of error and resolve it sooner.

Help / Update software...

This important menu command allows users to make software updates. After selecting this item, program will display question “**Are you sure?**”. If user confirms the question with answer **Yes**, dialog “**Select installation package**” will be displayed.



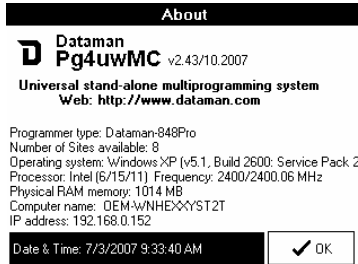
In this dialog user can browse for the “**pg4uwarc**” installation package he wishes to install. The installation package can be copied before, to shared Stand-Alone folder via network, or it can be stored on a USB key which can be plugged into USB port of Stand-Alone programmer. When USB key is plugged to USB port of programmer, new drive letter, assigned with USB key, will appear in list of available drives in dialog “**Select installation package**”. User can then select this drive and run installation package from the USB key.

When user confirms another confirmation dialog, update process will start.



During update process, control program of Stand-Alone programmer is closed, LCD panel can be blank for some moments and after installation is complete, automatic restart of standalone programmer will be performed. Whole process should not exceed time of 1-2 minutes.

Help / About...



Welcome screen is displayed on standalone's built-in LCD screen after successful starting of standalone control software. The screen can be also displayed by using menu command '**Help / About**'. Welcome screen contains following basic information:

- version of control software
- programmer type
- number of Sites available
- operating system
- information about processor and size of installed RAM memory
- computer name and IP address
- system date and time

Welcome screen can be closed by clicking on button **OK**.

Administration of build in PC

Introduction

- DATAMAN-848PRO Stand-Alone multiprogramming system is a powerful programmer equipped with Windows XP Embedded operating system ("OS"). There are two major kinds of administration of the OS – network and local. OS is configured with two users accounts
- **admin**
- **operator**.

Credentials for DATAMAN-848PRO Stand-Alone multiprogramming system users are:

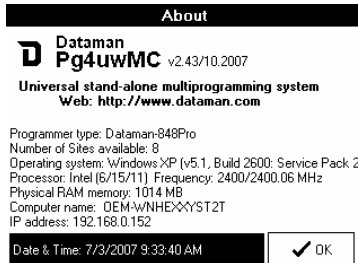
	Login	Password
Administrator	admin	saadmin
Operator	operator	saoperator

Network administration

Connecting to network

OS in programmer is configured for operating with **TCP/IP** network. To obtain correct IP address, the configured **DHCP** server must run in your local network, when programmer is starting. After programmer is started it will show "**Welcome**"/"**About**" screen. On bottom part of screen in line "**IP address:**" is the address obtained from DHCP server.

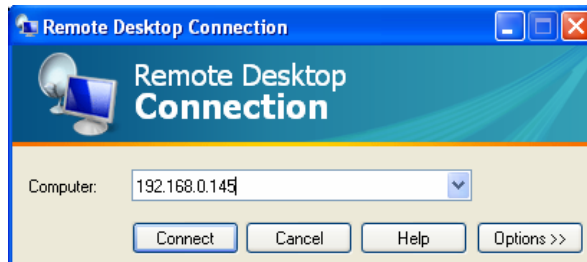
When IP address is equal to **127.0.0.1**, then no network cable is connected, DHCP server is not running when device start or other kinds of error occur – refer to troubleshooting chapter.



Remote control

Administering of DATAMAN-848PRO Stand-Alone multiprogramming system is performed through Microsoft **“Remote Desktop Connection”**. Remote desktop offers fast and comfortable way to update software (control software and system), distribute project files ...

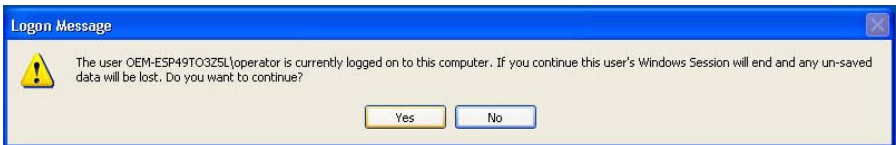
Find and run **“Remote Desktop Connection”** program on your computer. In **“Computer”** field enter IP address from **“Welcome”** screen of standalone programmer.



When communication is established enter administrator credentials.



Because Windows allows only one user connected at a time, next message may be showed.



Warning: *Connecting to programmer in time, when programming devices is running, programming will be immediately terminated – your devices may not be fully programmed. Restart computer after you finish remote administering.*

Because work with remote desktop is similar to working on local station, please continue to read chapter “Local administration”.

Local administration

For local administration of Stand-Alone programmer you **must have connected** standard PS/2 keyboard, PS/2 mouse, and standard analog display with resolution 1024x768 and 32bit color supported.

Operating disk is divided to three volumes. First volume named as “**Recovery**” (C:) contains software for **OS recovery** of programmer to state as shipped from factory. Standard start time of programmer is about 2 minutes. When device doesn't start in 10 minutes, then it may be necessary to perform OS recovery. Before operating system recovery, connect monitor to programmer, and kindly report what you see to programmer manufacturer. For next steps refer to “**Operating system recovery**” chapter. Second volume is “**System**” (D:), and contains **Windows XP Embedded** operating system.

Warning: Do not delete, change files or perform any writes on “Recovery” or “System” disk volumes.

Third volume is named as “Data” (E:). This volume contains Programmer, Projects, Logs, Updates and Temp directories.

Programmer is directory, where main control software is installed. In directory **Logs** are saved log files from operations with devices. When OS update files are available, they should be saved to **Updates** directory. Your project files should be in **Projects** directory. Exact update steps will be distributed with operating system updates.

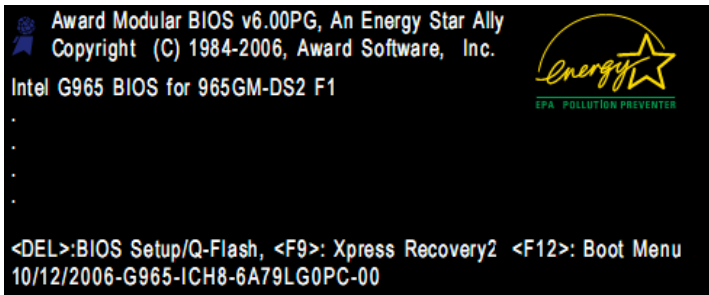
For programmer reliability operating system is **configured with write filters** on “Recovery” and “System” disk. As a side effect of these filters, any configuration changes in entire operating system will be **wasted** after restart or shutdown programmer.

Operating system recovery

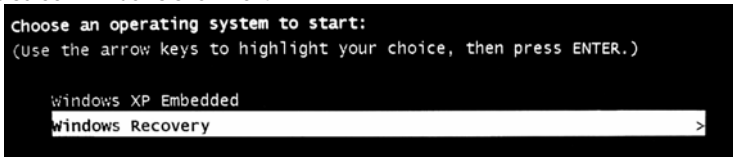
Recovery OS **performs refreshing** of programmer operating system to state as it was **shipped from factory**.

Before operating system recovery, connect monitor to programmer, and kindly report what you see to programmer manufacturer.

To perform operating system recovery you must have connected keyboard, mouse and display. Turn on programmer. Starting BIOS screen will show:



After this screen Windows show next:



With arrow keys (up or down) select “**Windows Recovery**” and press **Enter**. Recovery system will be started. **Please be patient**. This can take about four minutes. Then **EULA** license will show.

Please **read** carefully this license agreement, **close** window, press “**A**” if you accept this agreement.

Accepting agreement starts **formatting of disk D:**, and installation of control program (recovery **deletes Programmer directory** on disk E:, and creates new one). Also directories Updates and Temp has been erased and recreated. When recovery is completed, you should see "**System recovery completed.**". Then press any key, and system will restart. First start of the operating system after recovery may be a bit longer, with one additional restart.

Troubleshooting and warranty

Troubleshooting

We really want you to enjoy our product. Nevertheless, problems can occur. In such cases please follow the instructions below.

- It might be your mistake in not properly operating the programmer or its control program Pg4uw.
 - Please read carefully all the enclosed documentation again. Probably you will find the answer right away.
 - Try to install programmer and Pg4uw on another computer. If your system works normally on the other computer you might have a problem with the first PC. Compare differences between both computers.
 - Ask your in-house guru (every office has one!).
 - Ask the person who already installed the programmer.
- If the problem persists, please call the local dealer, from whom you purchased the programmer, or call DATAMAN direct. Most problems can be solved by email, fax or phone.
 - **E-mail** – Complete and submit the "**TECHNICAL SUPPORT REQUEST**" available from our website www.dataman.com. Include everything that you consider being relevant about the programmer, software and the target device.
 - **Mail/fax** – Print and complete the "**RETURNS FORM**" available from our website www.dataman.com. Include everything that you consider being relevant about the programmer, software and the target device. Send the completed form by mail or fax to DATAMAN (fax number in the control program, menu **Help / About**) or to your local dealer.
 - **Phone** - Call your local dealer or DATAMAN's customer support center (**+44 (0) 1300 320719**).
- If your programmer is diagnosed as defective, consult your local dealer or DATAMAN about the pertinent repair center in your country. Please carefully include the following items in the package:
 - Defective product
 - Completed "**RETURNS FORM**" available from our website www.dataman.com.
 - Photocopy of a dated proof of purchase

Without all these items we cannot admit your programmer for repair.

Note:

You may find the "**DEVICE PROBLEM REPORT**" form:

- at our Internet site (www.dataman.com), section Support / Problem report.

If you have an unsupported target device

If you need to operate on a target device not supported by the control program for programmer, please do not despair and follow these next steps:

- Look in the device list of the latest version of the control program on our Internet site (section Download, file corresponded to your programmer). Your new target device may already be included in this version! If yes, download and install the new version of the control program.
- Contact DATAMAN directly by completing and submitting the "**TECHNICAL SUPPORT REQUEST**" available from our website www.dataman.com. We may need to request data sheets and samples of your target device. Any samples will be returned to you after we include your target device in a new version of Pg4uw.

Warranty terms

The manufacturer, Dataman Programmers Ltd, gives a guarantee on failure-free operating of the DATAMAN-848PRO programmer and all its parts, materials and workmanship for **three years** from the date of purchase. This warranty is limited to 25,000-cycles on DIL ZIF socket or 10,000-cycles on other ZIF sockets). Although we take as much care as possible to integrate high quality components in the built-in computer, we can't provide a higher warranty as we get from suppliers. So there is a limited warranty of one year on all computer parts such as Motherboard, CPU, HD, If the product is diagnosed as defective, Dataman Programmers Ltd or the authorized repair centre will repair or replace defective parts at no charge. Parts used for replacement and/or whole programmer are warranted only for the remainder of the original warranty period.

For repair within the warranty period, the customer must prove the date of purchase.

These warranty terms are valid for customers, who purchase a programmer directly from Dataman. The warranty conditions of Dataman sellers may differ depending on the target country law system or Dataman seller's warranty policy.

The warranty does not apply to products that are of wear and tear or mechanically damaged. Equally, the warranty does not apply to products opened and/or repaired and/or altered by personnel not authorized by Dataman, or to products that have been misused, abused, accidentally damaged or that were improperly installed.

For unwarrantable repairs you will be billed according to the costs of replacement materials, service time and carriage. Dataman or its distributors will determine whether the defective product should be repaired or replaced and judge whether or not the warranty applies.

Please also see Troubleshooting section.

Manufacturer:

✉: Dataman Programmers Ltd
Station Road
Maiden Newton
Dorset
DT2 0AE
United Kingdom
☎: + 44 0 1300 320719
www.dataman.com, sales@dataman.com